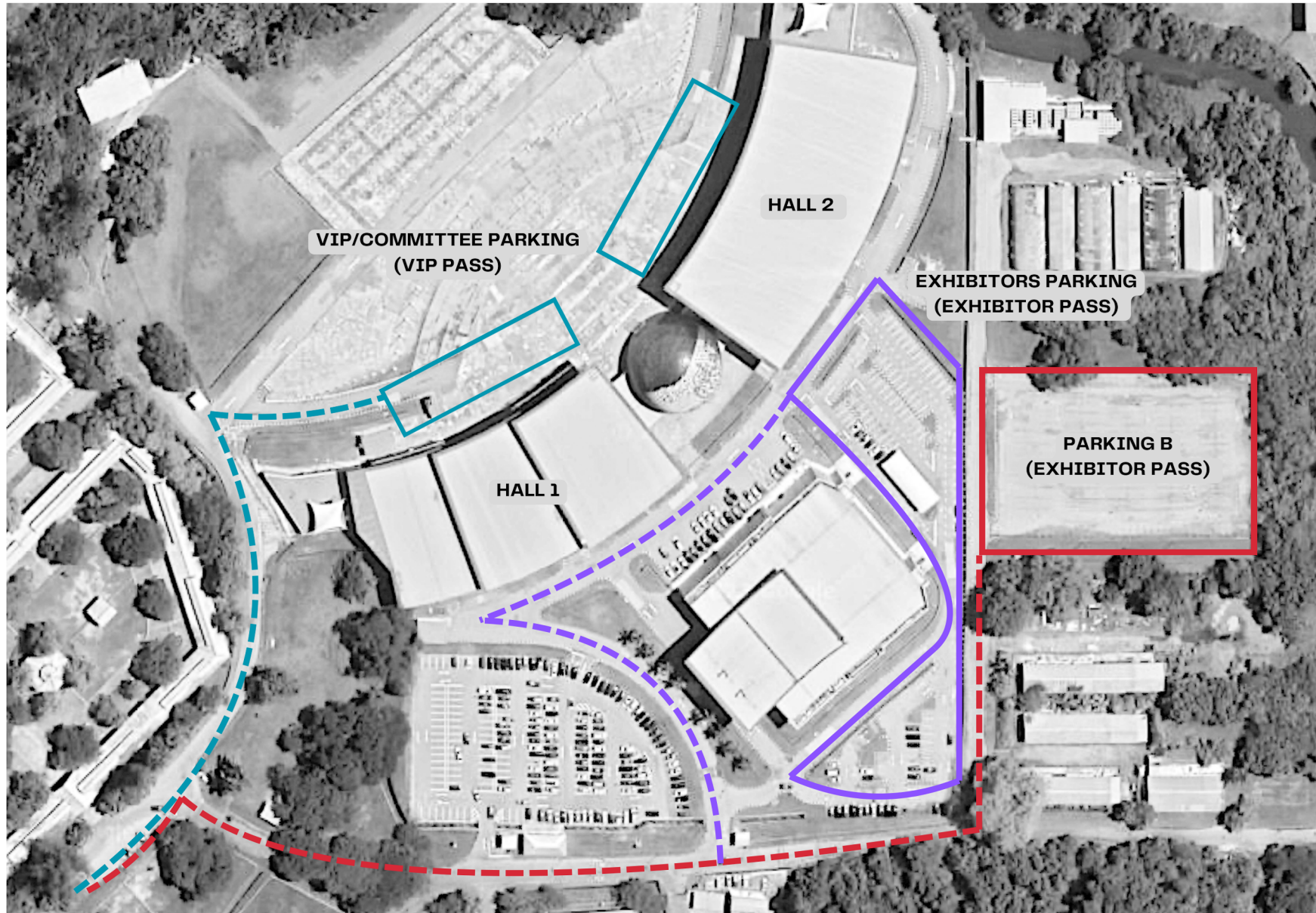


BRUNEI MSME FESTIVAL 2024 DESIGNATED CARPARK



**VIP/COMMITTEE PARKING
(VIP PASS)**



**EXHIBITORS PARKING*
(EXHIBITOR PASS)**



**PARKING B
(EXHIBITOR PASS)**

*** IN CASE OF PARKING CLOSURE DUE TO WEDDING EVENT, EXHIBITORS ARE ADVISED TO USE PARKING B (WITH EXHIBITOR PASS) OR PUBLIC PARKING.**